



“Global Top Gas Solution Provider”

TK-FUJIKIN COMPANY PROFILE





Contents

- 1. Company Profile**
- 2. Product Solution**



1-1. Introduction - General

MISSION : Growing into a company that contributes to the people, society and environment through providing a diversified gas solutions

COMPANY	TK-FUJIKIN CORPORATION
CEO	Kamio Seiji
TURNOVER	USD 429M (2024)
MANPOWER	1,008(2025.08)
LOCATION	Busan, Korea : 2 factories & offices Suwon, Korea : Sales office

BIZ Categories

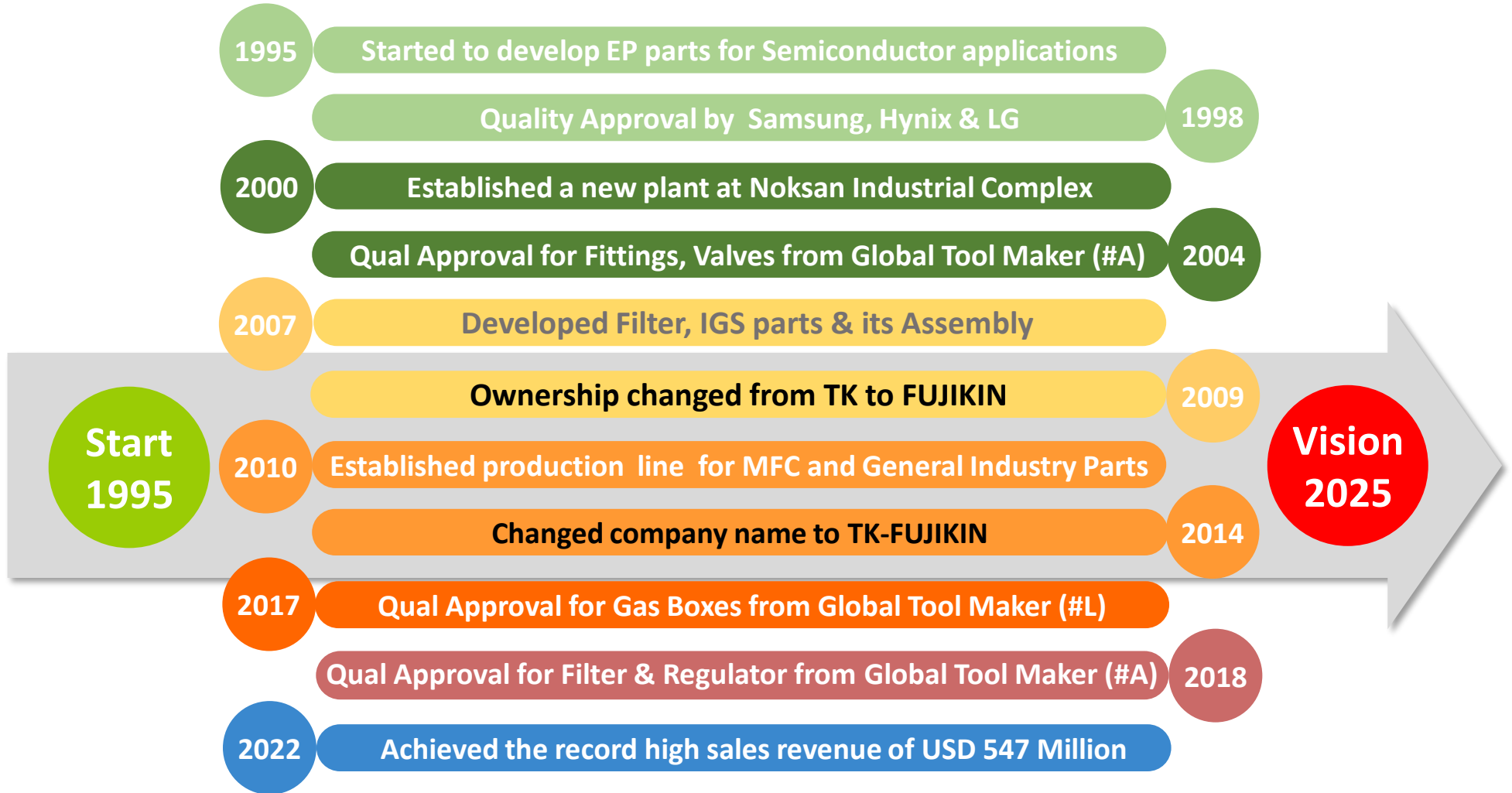
Ultra High Purity Biz (Since 1995) / Head factory

General Industry Biz (Since 2011) / Head factory

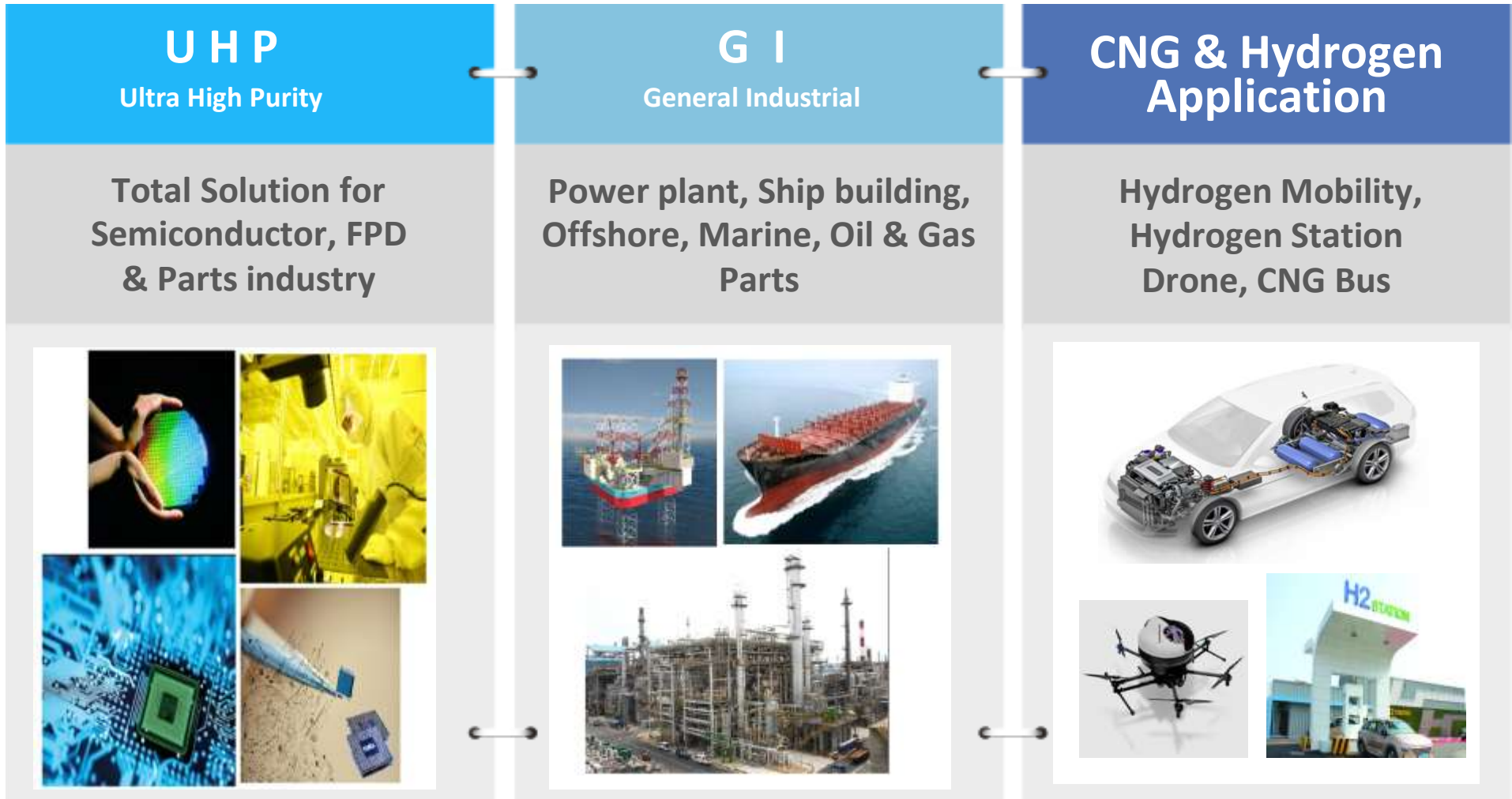
CNG & Hydrogen Biz (Since 2016) / Head factory

1-2. Introduction - History

* Becoming *Global Top Total Gas Solution Provider*

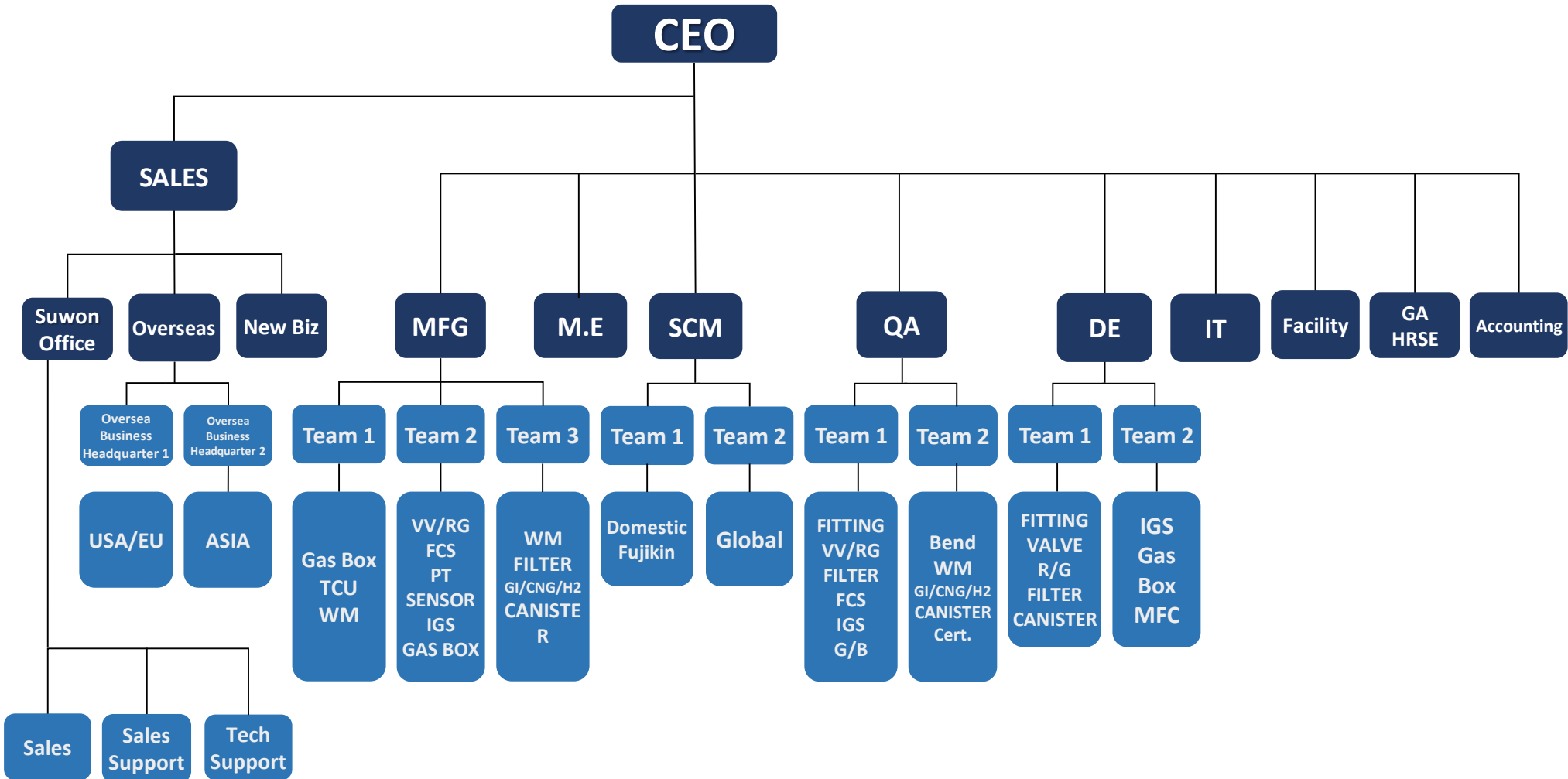


1-3. Introduction – BIZ scope



1-4. Organization

- Clearly defined roles and responsibility for every team and individual
- Expertise in advanced technology and engineering for customization
- R&D Investments: 5% of annual sales, 22% of the total workforce



1-5. Introduction - Location



HEAD FACTORY (Head office)



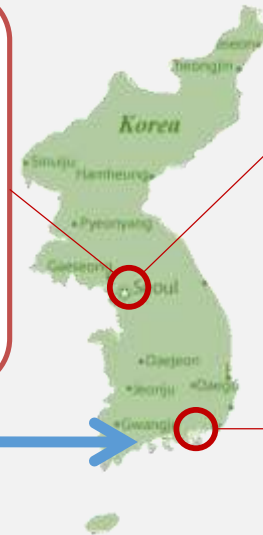
NOKSAN FACTORY



HEAD FACTORY

32, Hwajeonsandan 3-ro, Gangseo-gu,
Busan, Korea
Tel. 82-51-970-6700
Website : www.tk-fujikin.com

Suwon Sales Office



Suwon Sales Office

212, 102-Dong, 88, Sinwon-ro, Yeongtong-gu,
Suwon-si, Gyeonggi-do, 443-737, Korea
Tel. 82-51-970-6700
Website : www.tk-fujikin.com

NOKSAN FACTORY

7, Noksansandan 261-ro, 88beon-gil,
Gangseo-gu, Busan, Korea
Tel. 82-51-970-6700
Website : www.tk-fujikin.com

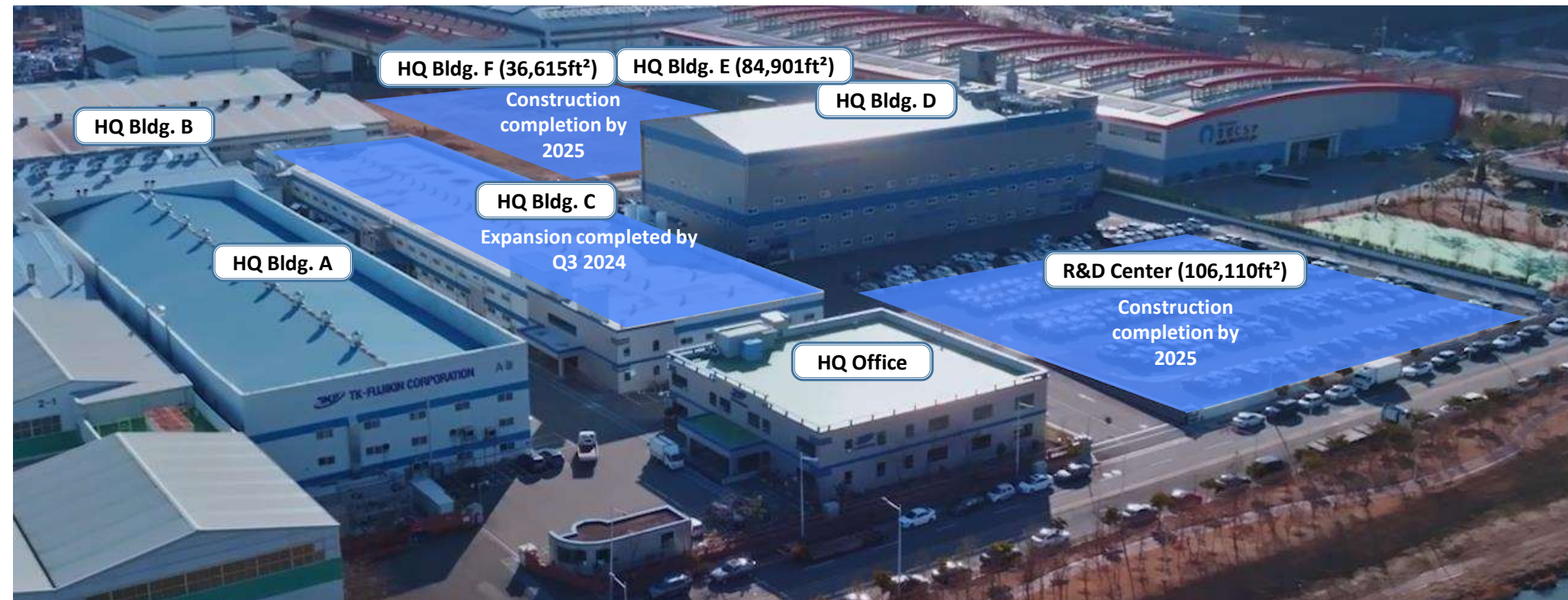
5 minutes by driving

1-6. Introduction-HQ Layout/New Facility Expansion

* HQ Layout/New facility expansion



1-6. Introduction-HQ Layout/New Facility Expansion



Expansion	Floor	Facility	Total Area (sqft)	Planned Completion
HQ Bldg. C	1	Warehouse	29,534	Q3 2024
HQ Bldg. C	2	Cleanrooms (Gas Box Integration)	33,306	Q3 2024
HQ Bldg. E	1	Warehouse	48,571	2025
HQ Bldg. E	2	Cleanrooms (Filter, IGS)	36,330	2025
HQ Bldg. E	3	Cleanrooms	-	Future expansion area
HQ Bldg. F	1	Warehouse (Raw materials)	36,615	2025
HQ R&D Center	1	Auditorium, Meeting Rooms, etc.	53,055	2025
HQ R&D Center	2	R&D Center	53,055	2025

New buildings and expansions will be completed by 2025, acquiring **290,466ft²** additional area.

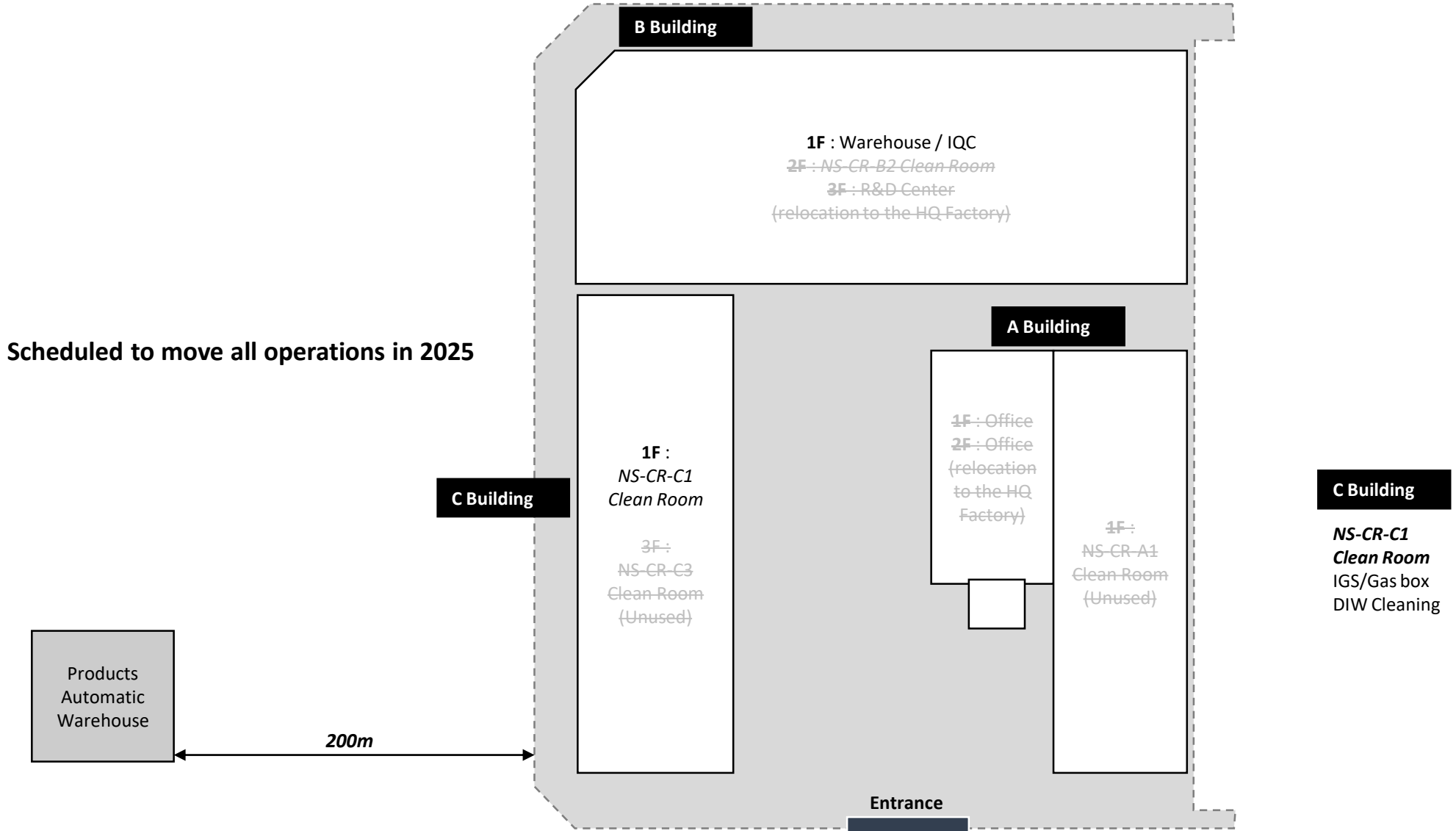
**Noksan Factory, currently used for gas box integration, will be closed by the end of 2025 and moved to HQ expansion area.*

**Bldg. A (Current): Machining shop, Filter sintering shop & C/R, Welding shop, Small ASSY C/R, Bend fitting shop*

**Bldg. B (Current): Raw material warehouse*

**Bldg. D (Current): Valve C/R, Regulator C/R, MFC C/R*

1-7. Introduction-Nocksan Factory Layout



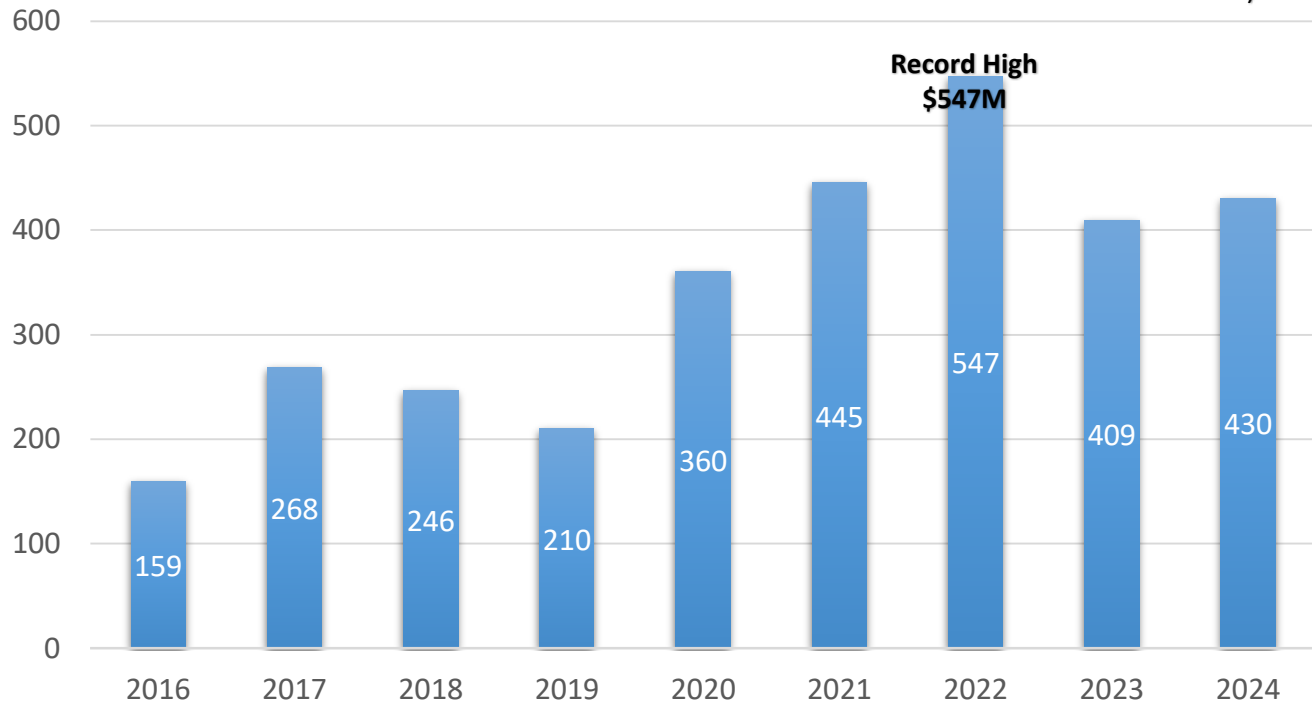
1-8. Introduction – Clean room facility



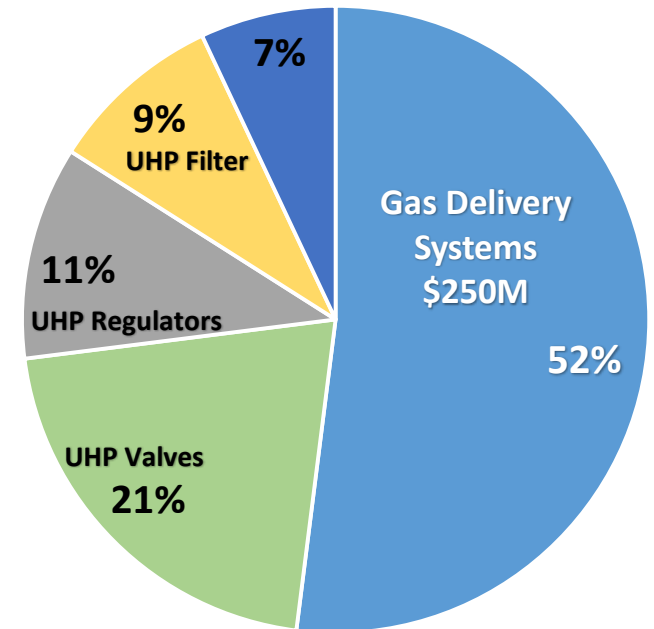
Section	HQ-CR-A2 Clean Room	HQ-CR-A2-1 Clean Room	HQ-CR-C1 Clean Room	HQ-CR-C3 Clean Room	HQ-CR-D3 Clean Room	HQ-CR-E3 Clean Room (Planned)	NS-CR-C1 Clean Room	NS-CR-A1 Clean Room	NS-CR-B2 Clean Room	NS-CR-C3 Clean Room
Location	HQ Factory A Building 2F	HQ Factory A Building 2F	HQ Factory C Building 1F	HQ Factory C Building 3F	HQ Factory D Building 3F	HQ Factory E Building 3F	Noksan Factory C Building 1F	Noksan Factory A Building 1F	Noksan Factory B Building 2F	Noksan Factory C Building 3F
Area	536 m ² 5,726 sqft 160 py	149 m ² 1,603 sqft 49 py	375 m ² 4,037 sqft 113py	2,944m ² 31,689 sqft 890 py	1,656 m ² 17,825 sqft 501 py	3,368 m ² 36,252 sqft 1,019 py	677 m ² 7,287 sqft 202 py	243-m ² 2,616-sqft 74 py	2,065-m ² 22,227-sqft 625-py)	747-m ² 8,040-sqft 226-py
Class F.S 209E (ISO14644-1)	100 (Class 5)	10,000 (Class 7)	10,000 (Class 7)	100 (Class 5)	10 (Class 4)	10 (Class 4)	10 (Class 4)	100 (Class 5)	100 (Class 5)	10 (Class 4)
Products	Filter Bend Fitting Weldment Canister	TCU Small Assembly	H2 Line NH2 Manifold QZ Regulator Manifold Receptacle	#L Gas Box	Small Size Valve Valve Overhaul Regulator FCS(MFC) PT Sensor	IGS Gas Box Gas Panel Filtler	IGS Gas Box Gas Panel	Not Used	Not Used	Not Used
Main Facilities	<ul style="list-style-type: none"> • DI-Water Generator • Ultrasonic Cleaning System • EP Machine • Automatic Welding Machine • Leak Detector • Particle Counter 	<ul style="list-style-type: none"> • Function Tester • Particle Counter • Leak Detector 	<ul style="list-style-type: none"> • Function Tester • Particle Counter • Leak Detector 	<ul style="list-style-type: none"> • DI-Water Generator • Ultrasonic Cleaning System • Automatic Welding Machine • TFX(Function Tester) • Leak Detector 	<ul style="list-style-type: none"> • DI-Water Generator • Ultrasonic Cleaning System • Valve Seat Press • Regulator Function Tester • Automatic Welding Machine • Leak Detector • Particle Counter • FCS Line 	<ul style="list-style-type: none"> • DI-Water Generator • Ultrasonic Cleaning System • EP Machine • Automatic Welding Machine • Auto IGS Block Assembly Machine • Function Tester • Leak Detector • Particle Counter 				

Overall Annual Sales Revenue

(US\$ Million)



Revenue Proportion (Product Type)



TK-FUJIKIN has been continuously increasing its market share and revenue.

2-1. UHP Total Solution

- Can be 100% TKF own components for IGS, Gas boxes, Gas Panels and Gas Sticks
: Fittings, Valves, Regulators, Filters, MFCs, PT sensors, Canister, Weldments, Blocks, MFS Gaskets (VCR, W-Seal & C-Seal), etc.

Products

Main(Utility Supply)



150A~600A
Bellows V/V
Flange or
Butt Welder

Sub-Main & H-Up(Pipe Line)



1/2" ~15A~250A
Bend Fittings
Clean Ball V/V
Bellows V/V
Diaphragm V/V

Process Equipment



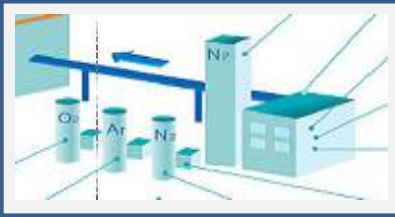
MFC, Filter
Gas Box, IGS,
Micro Fitting,
Regulator,
Canister, etc.

Applications

Utilities



Tools



2-2. GI Total Solution

- **Can be 100% TKF own components**
 - TKF manufactures all the components for these assembly products
(Lok Fittings, Ball VV, Plug VV, Check VV, Trunnion VV, Relief VV, Toggle VV, Etc)

Products



Applications

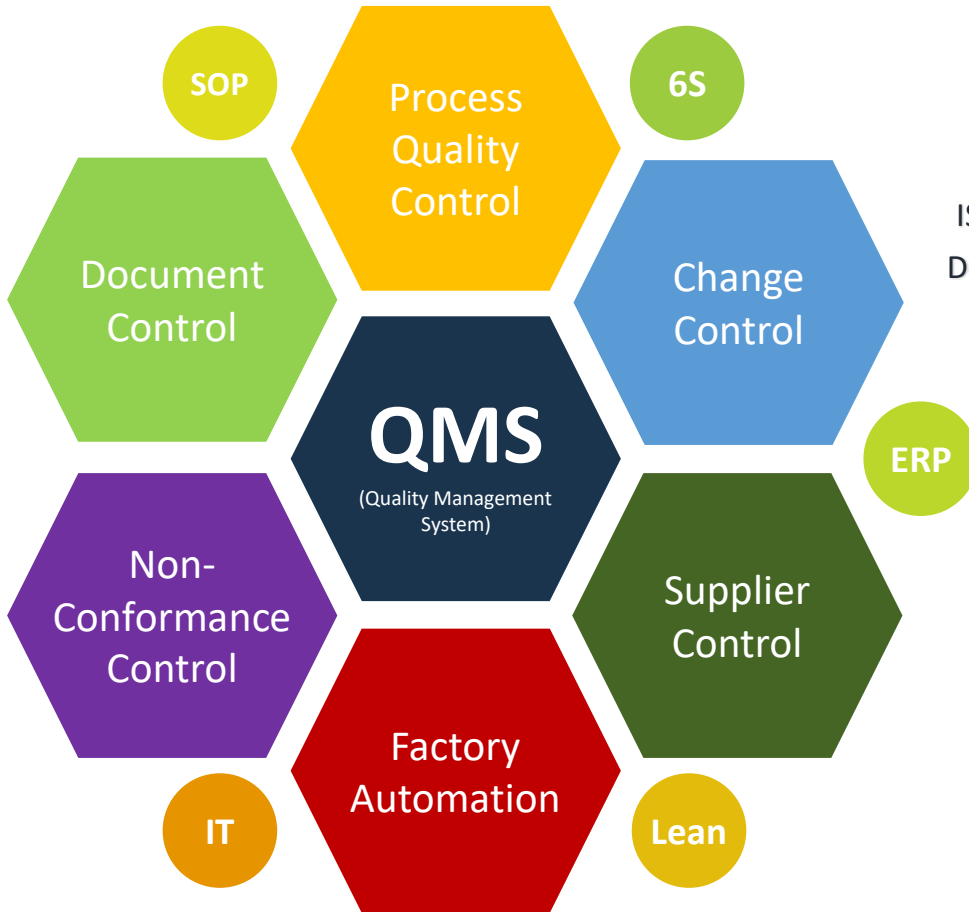


2-3. Capacity

Based on Double Shift

	SIZE	MONTHLY CAPACITY	REMARKS
Super Clean Fittings	1/4" ~ 1"	3,200,000ea	Connection 1/8~1"
Super Clean Bend Fittings	1/4" ~ 600A	20,000ea	Spool Header Tee Up to 900A
Valves	1/4" ~ 600A	140,000ea	Diaphragm, Bellows, etc
Regulators	1/4" ~ 3/4", 15A~40A	15,000ea	Untied/Tied, Micro, IGS
Filters	1/4" ~ 50A	32,000ea	SUS, PTFE, Hastelloy, Nickel element
GB/IGS/GP	As per Drawings	1,500 Panel	Customized design available
Weldments	As per Drawings	1,800ea	Orbital, Tag, Socket, Filet welding, Bending
MFC	As per Drawings	2,400ea	FCST / FCSP

2-2. Factory Key Operation Element



TK-Fujikin Quality Management System

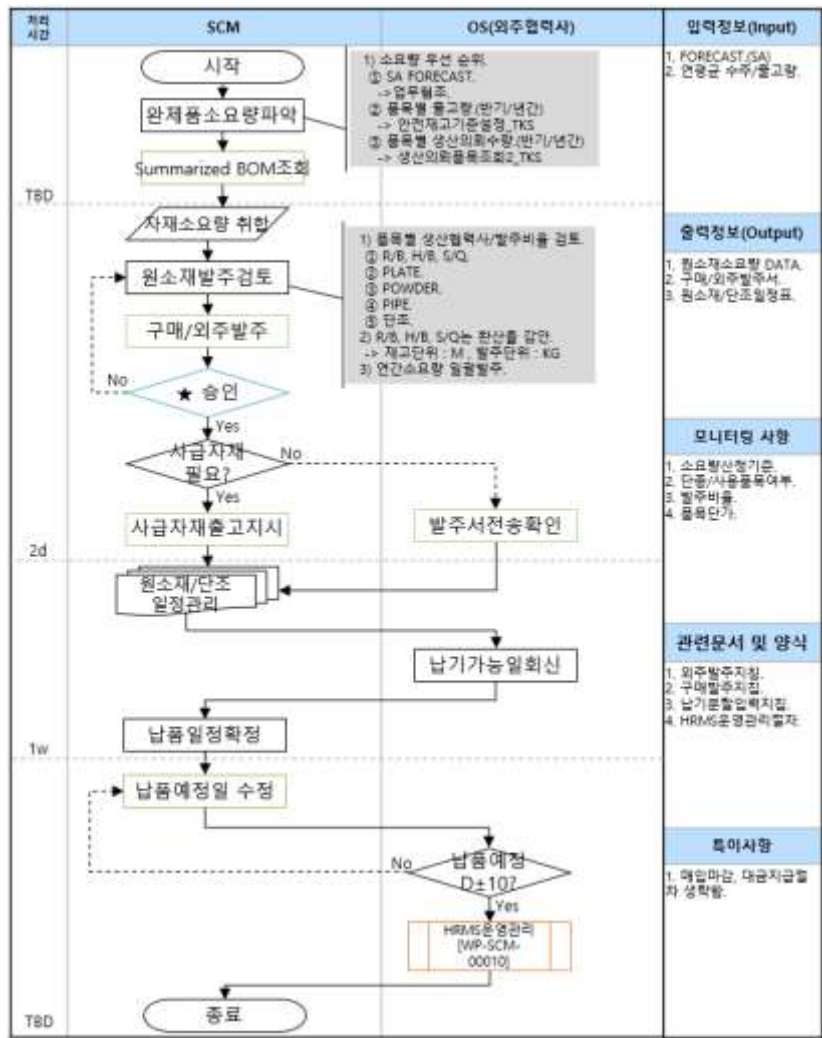
ISO 9001:2015-certified supplier with a robust QMS [QMS-R23.1]
 Designed to meet regulatory standards and customer expectations

Six key management elements:

- Process quality management
- Document management
- Non-conformity management
- Change management
- Supplier management
- Factory automation

2-3. Material Management

[WP-SCM-01027] Raw Material Management



Raw Material & Safety Stock Management

Raw materials are managed following standardized procedures:

- Storage & Preservation ([WP-SCM-00005])
- Raw Material Management ([WP-SCM-01027])
- Safety Stock Management ([WP-SCM-00011])

Safety Stock by TK-FUJIKIN:

Quarterly forecast assessment to establish safety stock strategy
Ensures both raw material and product safety stock for short lead times

Safety Stock by Distributors:

Coordination with distributors to maintain optimal stock levels
Adjustments based on specific customer forecasts

2-4. Technological Advancement

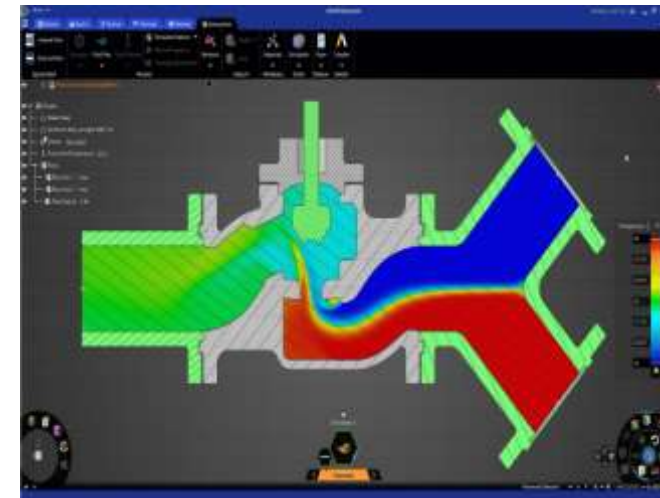
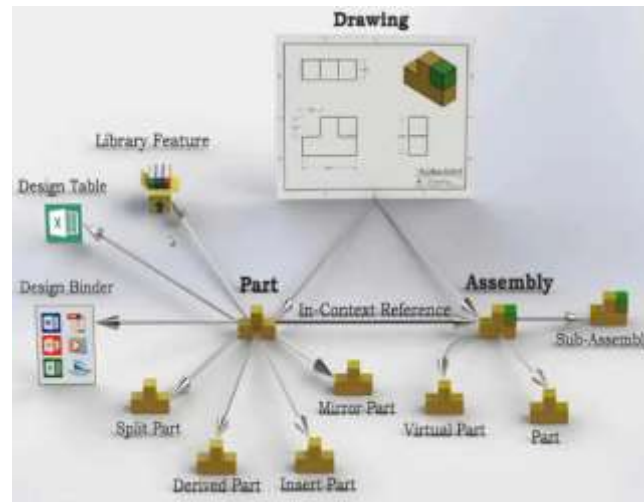
New ERP(Enterprise Resource Planning) K-System Ace, is being adopted from 2024 for the data-driven productivity improvements.

Solidworks PDM,

An advanced drawing management program, is being used for the design and engineering of the products

Ansys

An engineering simulation software, is used for the new product development and continuous improvements.



Along with operational productivity improvements by the advanced technologies, TK-FUJIKIN has been investing 5% of annual sales for R&D and 22% office workers are positioned in design and engineering department.

2-5. Factory automation



Machining Automation for Valves

80% reduction in headcount
155% increase in productivity
40% increase in capacity utilization



Automated CNC Process

50% reduction in headcount
140% increase in productivity
40% increase in capacity utilization



Automated Function test for Regulators

Reduced headcount by 6
160% increase in productivity

As part of company-wide efforts for cost savings, manufacturing line automation has proven to be effective.

Also, TK-FUJIKIN actively promotes individual employee's idea by annual rewards for improving productivities and reducing costs.

2-5. Certification



ISO 9001



ISO 14001



OHSAS
18001



ASMEN



ASME NPT



KEPIC



CE



ISO 45001

* N: Nuclear Components

* NPT: Nuclear Partials

*Korea Electric Power Industry Code



TNU NORD



EIL

* Engineers India Limited



ABS

* Design



ABS

* Manufacturing



BV



LR



NK



ISO 19880-3

TK-FUJIKIN has acquired major licenses & certifications for quality and operation systems based on international standards.

3. Summary

1 Global Network

- Global Sales & Production Network
- Onsite “after service”
- Lean line manufacturing system with years of experience

2 Customer Satisfaction

- Designing capability & Customized Products
- OTD Control
- Utilizing customer Forecast & Demand

3 Quality assurance

- 5M1E Change Management
- 100% Final Inspection
- Real time trouble shooting
- SPC, Gauge R & R

4 Total Product Solution

- Lineup of all the products required for the gas system.
- Total solution is available in Korea for developments, production, services, etc.



With the philosophy of "Customer Comes First", TK-FUJIKIN pursues the best quality, reasonable prices and suitable delivery. TK-FUJIKIN and our companies, we will do our best to satisfy our customers' demands by supplying top quality products and the best services.

***" We are here for you.
Thank you. "***



Domestic Sales Team

Tel. 82-51-608-6505
Fax. 82-51-608-6502

Overseas Sales Team

Tel. 82-51-970-6761
Fax. 82-51-831-1215

Quality Assurance Dept.

Tel. 82-51-899-6815
Fax. 82-51-831-1215

Production Dept.

Tel. 82-51-608-6510
Fax. 82-51-608-6502

Procurement Team

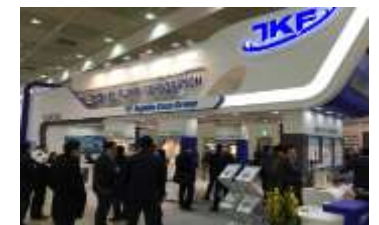
Tel. 82-51-608-6520
Fax. 82-51-608-6502

Engineering Team

Tel. 82-51-970-6791

R & D Team

Tel. 82-51-608-6570




*Appendix-Experiences, Track Records and Qualification Status



CLIENTS	PROJECTS	CONTRACTORS	ITEMS	REMARK
	5 LINE 6 LINE	KC TECH SAMSUNG ELEC.	Bellows Valve (20A~50A) Ball Valve (¼"~) Diaphragm Valve (¼"~)	GC & 2 ND
	7 LINE 8 LINE	ATTO CO., LTD HANYANG ENG.	UHP Fitting (¼"~) Diaphragm Valve (¼"~) Bellows Valve (25A~) Flange (100A~)	
	9 LINE PHASE I	SAMSUNG ELEC. HANYANG ENG.		
	9 LINE PHASE II	STI, SUNGDO ENG.		CCSS Unit & 2 ND
	LCD PHASE IV (LCD)	ATTO CO., LTD		GC & 2 ND
	M-PROJECT 10 LINE	SUNGDO ENG. STI	UHP fitting (¼"~) Diaphragm Valve (¼"~) Bellows Valve (20A~) Ball Valve (¼"~)	CCSS Unit & 2 ND GCS, UT
	M2-PROJECT 11 LINE			
	T-PROJECT 12 LINE	NIPPONSANSO (TECHNO SEMICHEM)		Main, Sub-main MC Room EDS & NF3, Gas Room CCSS, UT, GCS
	G-PROJECT 13 LINE			
	S-PROJECT 14 LINE	KPC		
NRD-PROJECT				

*Appendix-Experiences, Track Records and Qualification Status



CLIENTS	PROJECTS	CONTRACTORS	ITEMS	REMARK
	C-6 CHEONAN (LCD)	KPC SEBO MEC	UHP Fitting (¼" ~300A) Diaphragm Valve (½" ~1") Bellows Valve (25A~300A)	Main, Sub-main , MC Room EDS & NF3, Gas Room CCSS, UT, GCS
	T-7 TANGJEONG (LCD)			
	E-PROJECT	SAMSUNG C&T HANYANG ENG. SEBO MEC AARON (BSGS, CR)	UHP Fitting (¼"~850A) Diaphragm Valve (¼"~1") Bellows Valve (¼"~1", 15A~550A) Compression fitting (⅜~1") Regulator (¼"~1") Filter (¼"~50A)	
	U-PROJECT			
	CVD & CMP			
	A2 PROJECT / Module 2 main line (SAS)			
	15 LINE			
	T-8 TANGJEONG (LCD)	HANYANG ENG. SEBO MEC	UHP Fitting (¼"~850A) Diaphragm Valve (¼"~1") Bellows Valve (¼"~1", 15A~550A) Compression fitting (⅜~1") Regulator (¼"~1") Filter (¼"~50A)	
	13 LINE-Nano Fab	SAMSUNG C&T HANYANG ENG. SUNGDO ENG. SEBO MEC AARON (BSGS, CR)		
	H1-SITE, 14 LINE-EDS, 15 LINE M3			
	16~17 LINE			
	P-PROJECT (P1, P2, P3)			
	A1 (OLED)	HANYANG ENG. SUNGDO ENG.		
	A2 (OLED)			
	A3 (OLED)			



*Appendix-Experiences, Track Records and Qualification Status



CLIENTS	PROJECTS	CONTRACTORS	ITEMS	REMARK
	P-1	KC TECH / KOREA ENG. STI ,SUNGDO ENG.	UHP Fitting (½"~250A)	GC & 2 ND . CCSS Unit CCSS Unit 2 ND
	P-2	SUNGDO ENG.		2 ND
	P-2 CAPA UP	TOP ENG.		
	P-1, P-3 CAPA UP (LCD)	SERVE ONE	UHP Fitting (~1")	H/U
	P-4~6 (LCD)		Diaphragm Valve (~3/4") Bellows Valve (~300A)	Main, Sub-main CCSS Process Gas
	P-6 CAPA UP (LCD)			
	G-7 (LCD)			
	P5-Wing (LCD)		UHP Fitting (~1") Diaphragm Valve (~3/4") Bellows Valve (~ 550A) Ball valve (~250A) Compression fitting (~1")	
	P-8 (LCD)			
	P-9 (OLED)			
P-10 (OLED)				

*Appendix-Experiences, Track Records and Qualification Status



CLIENTS	PROJECTS	CONTRACTORS	ITEMS	REMARK
	P1 & P2 CAPA UP	KC TECH	UHP Fitting	GC & 2 ND
	P2 CAPA UP	GE SEVEN		Equipment
	FAB-VII	HYUNDAI ELECTRONICS	UHP Fitting	Main, Sub-main CCSS, GCS Process Gas Equipment Gas Room
	FAB-VI FAB-V	ATTO CO., LTD HANYANG ENG.	UHP Fitting	
	MEMORY LAB	SK E&C SK Air Gas Air Liquide China Linde Korea HANYANG ENG. SUNGDO ENG. KC ENS SEBO MEC	UHP Fittings (¼"~) Diaphragm Valve (¼"~) Bellows Valve (¼"~) Ball Valve (25A~) Regulator (¼"~½") Filter (¼")	
	B-1			
	M-10			
	T-1			
	C-1 & C-2 China FAB (China)			
	A-PROJECT			
	M7A			
	M11~M16			




*Appendix-Experiences, Track Records and Qualification Status



CLIENTS	EQUIPMENT	CONTRACTORS	ITEMS	REMARK
	ETCH CLEANING	TKF DIRECT BIZ	IGS/Gas Box Fitting Valve	Equipment
	DEPOSITION (CVD, ALD)	TKF DIRECT BIZ	IGS Fitting Valve Regulator	Equipment
	ASHING (Dry Strip) ETCH (Bevel Etch)	TKF DIRECT BIZ	IGS FALVS Regulator	Equipment
EUGENE TECHNOLOGY	DEPOSITION (CVD, ALD)	TKF DIRECT BIZ	IGS Fitting Valve Regulator	Equipment
	DIFFUSION	TKF DIRECT BIZ	IGS	Equipment
	DEPOSITION (CVD)	TKF DIRECT BIZ	IGS	Equipment

*Appendix-Experiences, Track Records and Qualification Status



CLIENTS	PROJECTS / EQUIPMENT	CONTRACTORS	ITEMS	REMARK
	AKT DISPLAY DSSL TOOLS ETCH DEPOSITION	TKF DIRECT BIZ	Gas Box & Panel Weldment Regulator (C-seal) Filter (C-seal)	Equipment
	ETCH DEPOSITION	TKF DIRECT BIZ	Gas Box Weldment Valve Assembly Fitting Regulator Filter	Equipment
	Various Wafer Fabrication Tools	TKF DIRECT BIZ	IGS (W-SEAL) Weldments Regulators	-

*Appendix-Experiences, Track Records and Qualification Status



CLIENTS	PROJECTS / EQUIPMENT	CONTRACTORS	ITEMS	REMARK
	B3~B11 PROJECT	ZDE/ZDS JSBC BOTH XIDA Air Liquide China	Ball Valve (~250A) Bellows Valve (~300A) Butterfly Valve(~350A) Compression fitting (~1") UHP fitting (~1") Diaphragm Valve (~1")	Facility
	Suzhou LCD (SSL) Xian memory SCS	SAMSUNG C&T HANYANG ENG. SUNGDO ENG.	Bend fitting (40A~) UHP fitting (~1") Diaphragm Valve (~1") Bellows Valve (~500A) Ball Valve (20A~)	Facility Main, Sub-main CCSS, GCS Process Gas Equipment
	ETCH	Fujikin incorporated TKF DIRECT BIZ	Gas Box Regulator (W-seal) Filter (W-seal) PT Sensor (W-seal) MFC	Equipment
	DEPOSITION (CVD, ALD)	Fujikin incorporated TKF DIRECT BIZ	Regulator (W-seal) Filter (W-seal)	Equipment
	DEPOSITION	Fujikin incorporated	IGS(W-seal)	Equipment